

COMPANY PROFILE





About **US**

JUSDOX COSULTING is a private trading company of land surveying, engineering services and mining equipment's supplier based in DRC . The Company conducted the following services and supplies:

- Land surveying works; Professional drones Differential accurate GPS and total station and bathymetric survey (Exploration, Mine, Civil Engineering, environment, etc.)
- Surveying equipment's and accessories supplies
- Mechanics , electricals spare supplier's and services
- Civil work services (Fencing, building, concrete works, steel structure...)
- Technician provider's
- Soil investigation

Jusdox seeing the opportunity and potential in the Democratic Republic of Congo (DRC) has then developed and established a Technical Sales branch's (as buying house) to handle and respond to all enquiries from the mining, public and private companies.

Overview

—

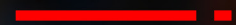


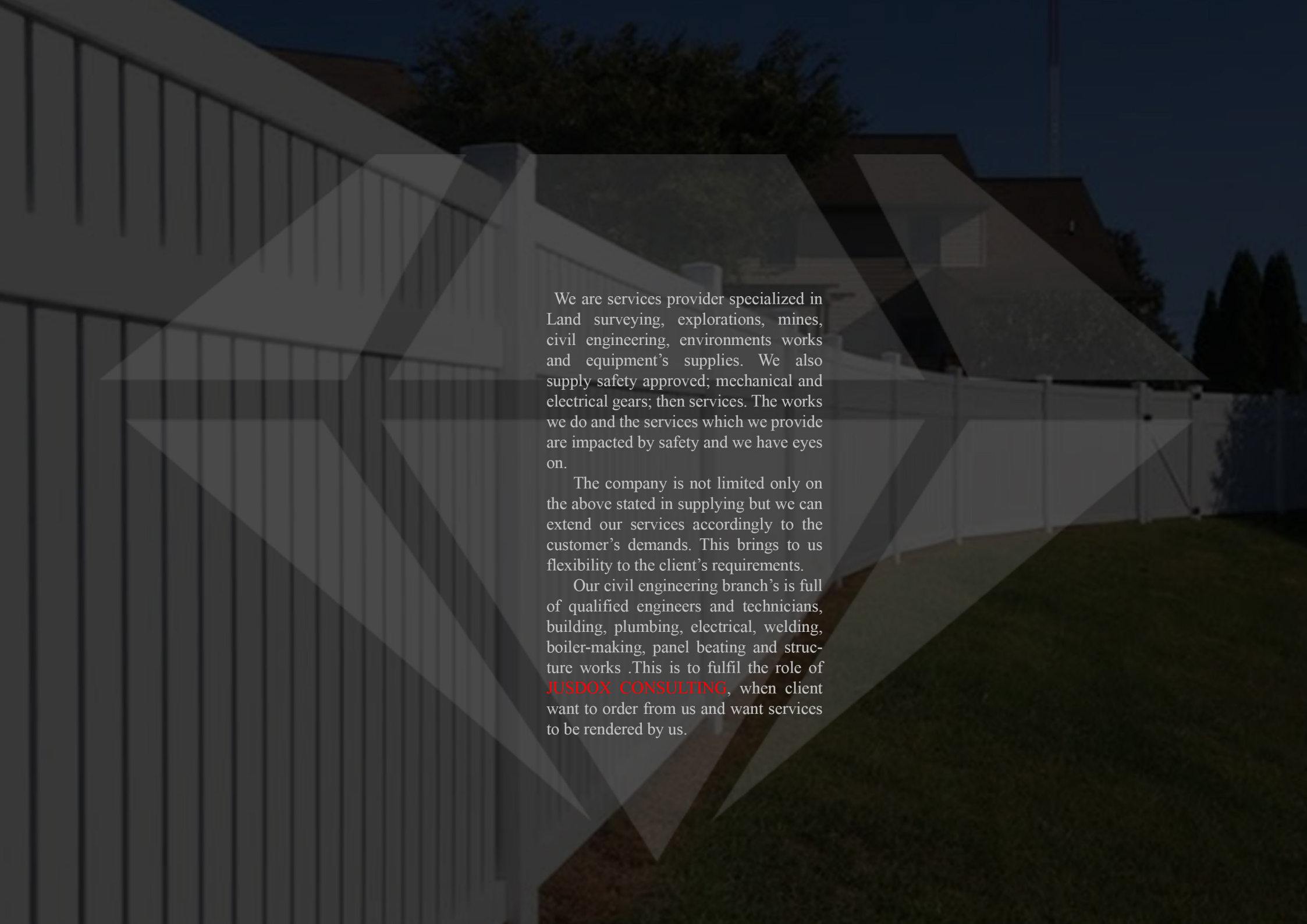
Jusdox Consulting has chosen not to be limited on services supplies, but to also be specialized in delivering creative solution to meet the various customers need according to their enquiry.

The management has assembled carefully the expert's measures which enable to be in accordance with the customers. Our aim is to ensure the satisfactory works to our customers and ensure that partners have prompt and rapid escalation and resolution.

A yellow surveying instrument, possibly a total station or theodolite, is mounted on a yellow tripod. The background is dark and blurred, suggesting an outdoor construction or surveying site. The word "Description" is overlaid in large white text.

Description





We are services provider specialized in Land surveying, explorations, mines, civil engineering, environments works and equipment's supplies. We also supply safety approved; mechanical and electrical gears; then services. The works we do and the services which we provide are impacted by safety and we have eyes on.

The company is not limited only on the above stated in supplying but we can extend our services accordingly to the customer's demands. This brings to us flexibility to the client's requirements.

Our civil engineering branch's is full of qualified engineers and technicians, building, plumbing, electrical, welding, boiler-making, panel beating and structure works .This is to fulfil the role of **JUSDOX CONSULTING**, when client want to order from us and want services to be rendered by us.

A photograph of two construction workers from the waist down. The worker on the left is wearing a bright orange high-visibility safety vest with reflective silver stripes over a dark quilted jacket and blue jeans. The worker on the right is wearing a grey and black plaid shirt, grey overalls, and blue jeans. Both workers are holding a bright orange hard hat. The background is a blurred industrial setting with overhead lights.

Our Mission

We will always ensure that our customer is satisfied, offered the most competitive price in the industries for our services and suppliers.

We intend to serve the customer in various manners as per requirements; we prefer being the right hand of the customer by responding to the client calls at the right and required time and with appropriated responses.

We also prefer not to only be a supplier but an adviser to the customer, growing with the client together, support the customer in his entire career and assist the customer to reduce and save the cost.



JUSDox - CONSULTING

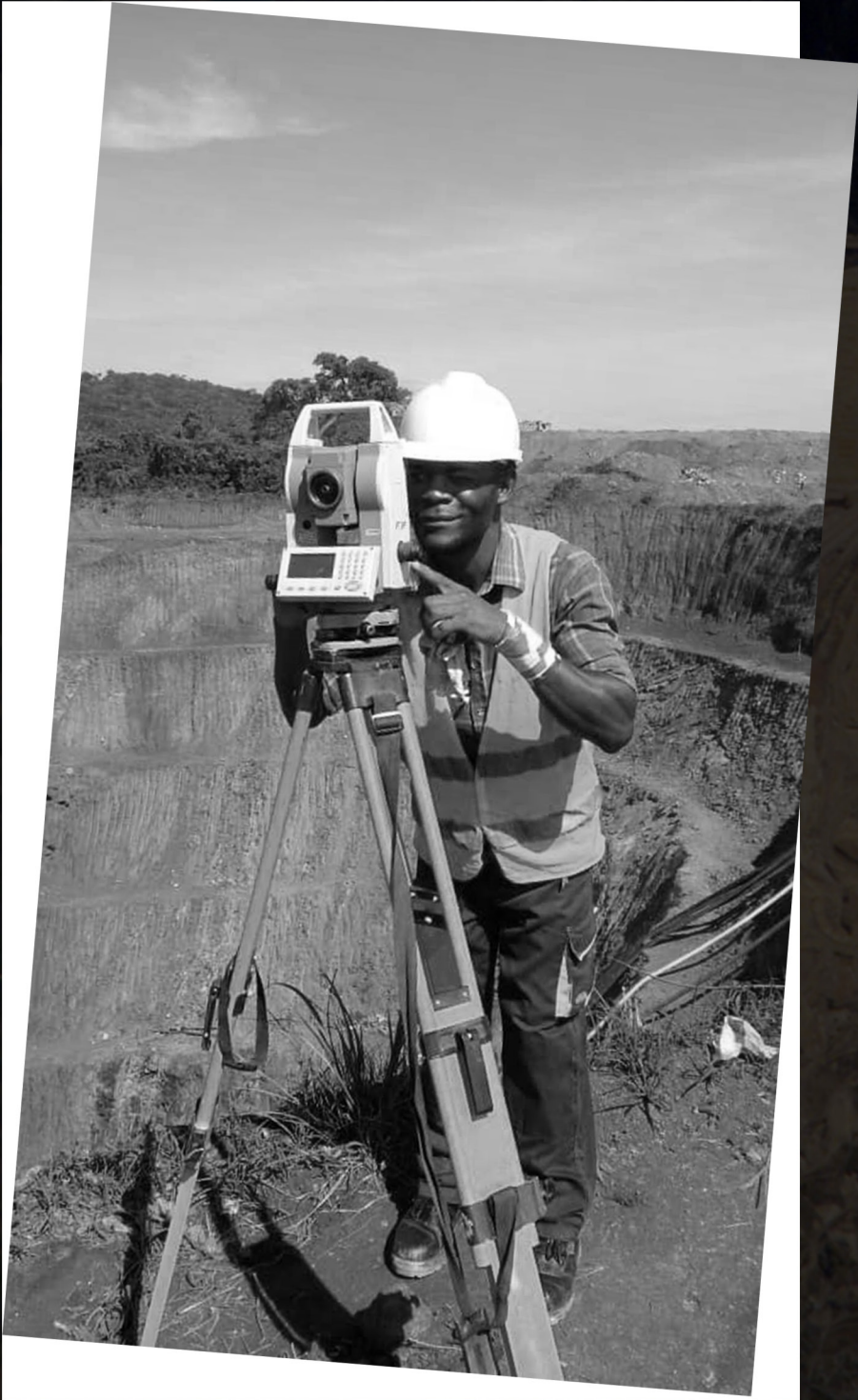
Our Vision

To be the preferred suppliers of required raw materials, equipment's, services and consultancies company of our customers choice.

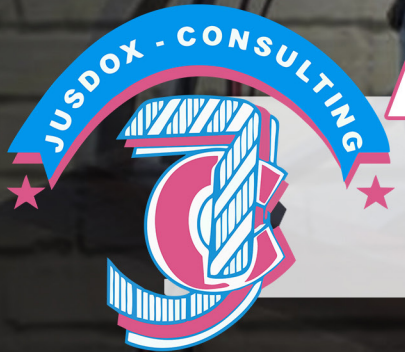
Our Clients



MMG KINSEVERE/ MMG GROUP
SOCIETE D'EXPLOITATION DE KIPOI
(SEK)/ TIGER GROUP
METALKOL /ERG GROUP
ANVIL MINING CONGO (AMC)/
TRAFIGURA GROUP
CHEMICAL OF AFRICA (CHEMAF)
KALONGWE MINING
MINING HAULAGE KATANGA
(MHK)
AVZ MINING SA / DATHCOM
GROUP
MABENDE MINING SA
PPC BARNET MANUFACTURED SA

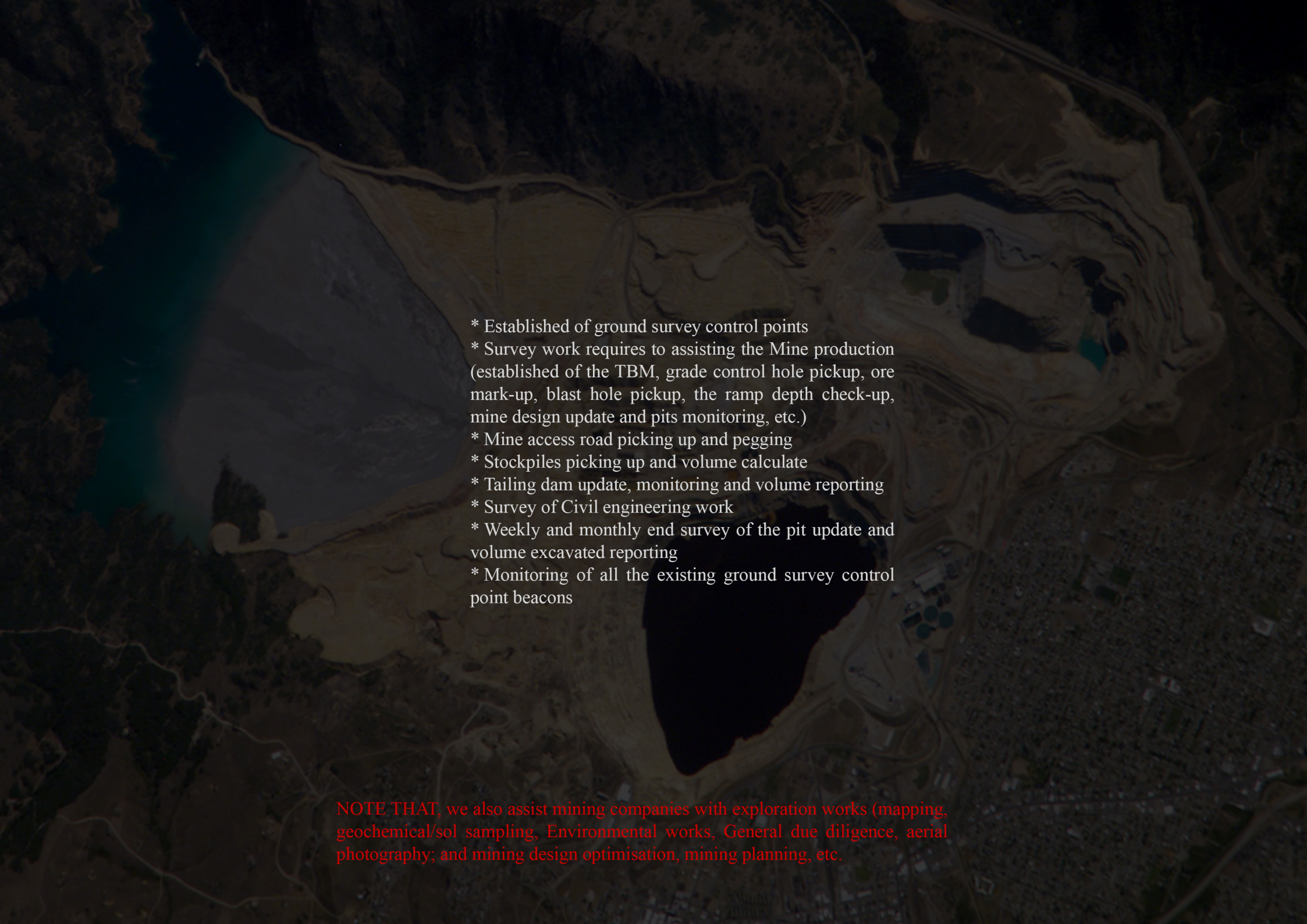


Our Services

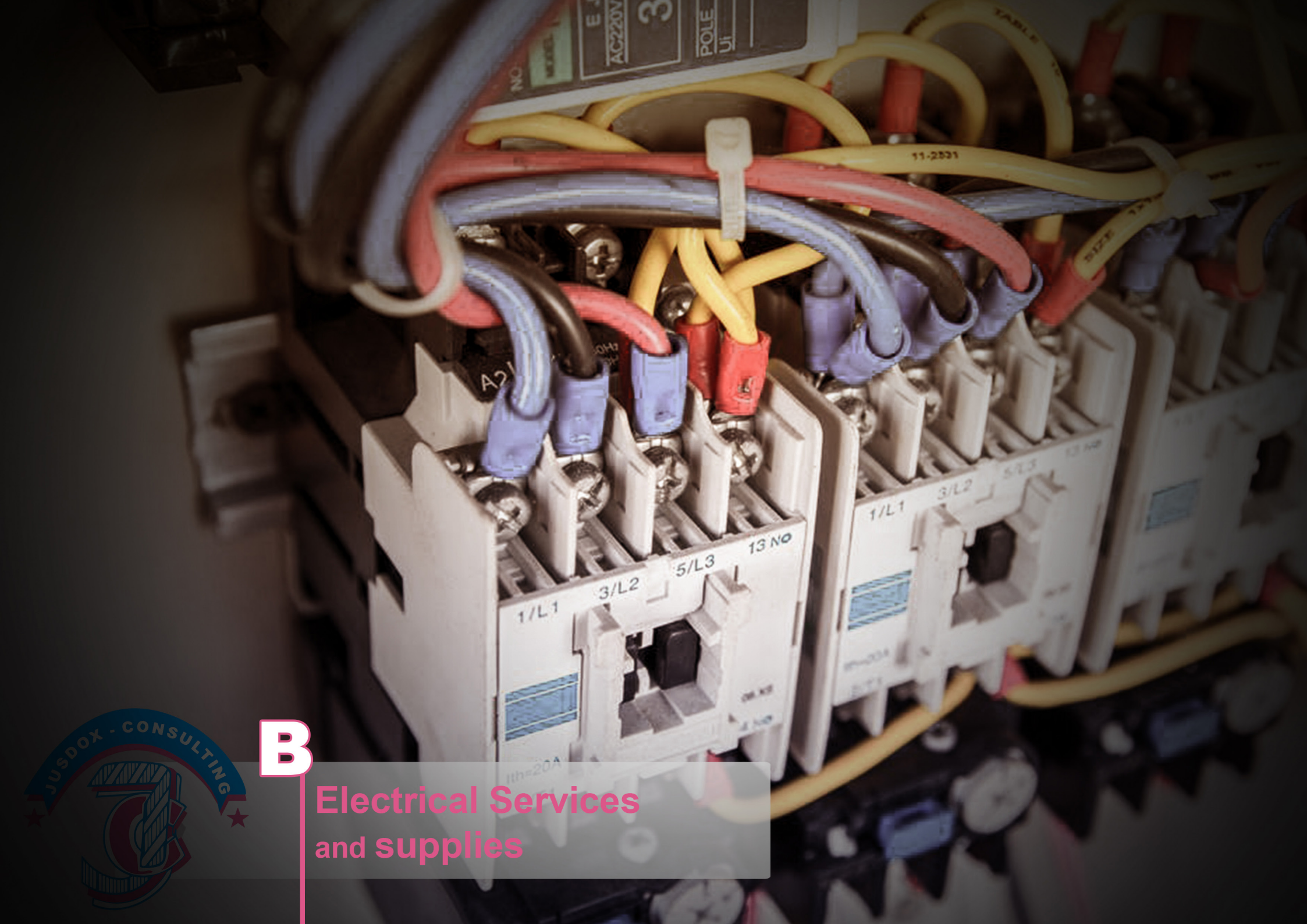


A

**Land Surveying services
and supplies equipment's**

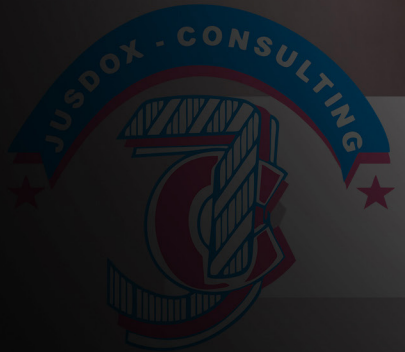
- 
- An aerial photograph of a mining site. A large, dark, irregularly shaped pit is the central feature. To the left, there is a body of water. The surrounding terrain is rugged and hilly. In the lower right, there are several buildings and structures, likely part of the mine's infrastructure. The overall scene is in shades of brown and grey, with some blue highlights from the water and sky.
- * Established of ground survey control points
 - * Survey work requires to assisting the Mine production (established of the TBM, grade control hole pickup, ore mark-up, blast hole pickup, the ramp depth check-up, mine design update and pits monitoring, etc.)
 - * Mine access road picking up and pegging
 - * Stockpiles picking up and volume calculate
 - * Tailing dam update, monitoring and volume reporting
 - * Survey of Civil engineering work
 - * Weekly and monthly end survey of the pit update and volume excavated reporting
 - * Monitoring of all the existing ground survey control point beacons

NOTE THAT, we also assist mining companies with exploration works (mapping, geochemical/sol sampling, Environmental works, General due diligence, aerial photography; and mining design optimisation, mining planning, etc.



B

Electrical Services
and supplies





Industrial Generator Installation, services, supplies and maintenance



Motor in plant **services,**
supplies and maintenance





-Motor rewinding's services (*pumps and motors*)
-Electrical pump installation, supplies services and maintenance




Oil transformer's **testing** and **services**

- 
- Electrical building services
 - Circuit breakers supplies
 - Inverter services, supplies and maintenance



**Solar panel and
pumps services and
supplies**



LED lamp services,
supplies, maintenance and adviser
Grounding installation and testing
Electrical equipment's Services and supplies



Air conditioners, cold room,
refrigerator system services
and maintenance



C

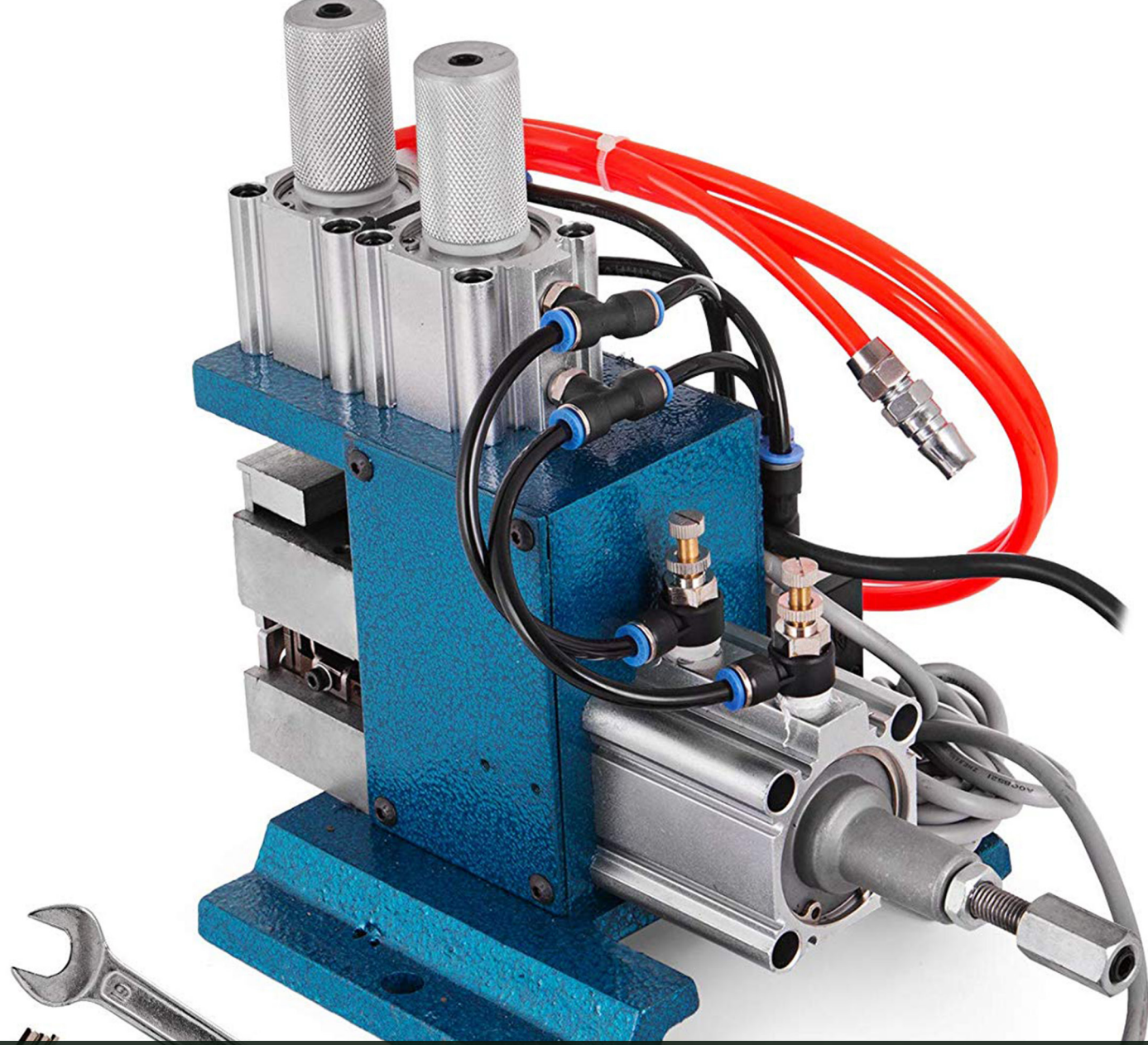
Mechanical Services



conveyors,
bearing services,
supplies and maintenance



Welding steel equipment



Stripping machine pneumatic services and supplies



Stainless steel painting services



Pumps services, supplies and maintenance



Flexible hydraulic hoses



lashing ropes and machines



bearing suppliers



pipes works and suppliers



D

Civil Work and supplies
some



Backfilling with excavators, dozers, graders and compactor



Road maintain



Fence installation



Construct building



Steel structure



Industrial concrete



Welding steel equipment



Our Contacts

Need to know more on details?

Call Us at ;
Manager Director :
Augustin NONO NKOLE :
+243 99 714 87 16
+243 81 523 44 23
+243 84 742 39 52
Technical Director :
Aaron Patient NGONGO
Business Manager :
Idole KAYOMBO :
+243 85 450 96 73

www.jusdox.com / sales@jusdox.com